



WASHINGTON STATE
MUSIC TEACHERS
ASSOCIATION

WSMTA State Conference

Music is Central



Saturday-Monday, June 27-29, 2026

Central Washington University · Ellensburg, WA



TRANSFORMING PASSION INTO PURPOSE

Here, you'll learn and perform alongside peers and faculty who share your commitment to excellence.

Take the next steps
and audition today.
cwu.edu/music



CWU | CREATE YOUR FUTURE

CREATIVITY THRIVES HERE



Portland State
School of Music & Theater

- Bachelor's and Master's degrees offered with emphases on music, piano performance, jazz, and more
- Wellness classes available for injury-prevention and efficient technique
- Opportunities to work with world-renowned faculty and guests
- Piano-specific scholarships available



[PDX.EDU/MUSIC-THEATER/](https://pdx.edu/music-theater/)

**NOW ACCEPTING
APPLICATIONS FOR
THE 2027-28
ACADEMIC YEAR**

PSU STEINWAY PIANO SERIES

The PSU Steinway Piano Series brings internationally acclaimed pianists to Portland twice yearly for a weekend of public recitals and master classes.



**"One of the secretly best
concert series in Portland!"**

- Oregon ArtsWatch

Join us, November 6, for our Fall Recital!

***The Forgotten Romantic*, featuring pianist Chad R. Bowles**

Public master class by Bowles, November 5



STEINWAY & SONS
PORTLAND



MUSIC TEACHERS NATIONAL ASSOCIATION

June 27, 2026

Dear WSMTA Members:

On behalf of the MTNA Board of Directors and National Staff, welcome to the Washington State Conference. Connecting with fellow teachers from across your state is one of the most meaningful benefits of MTNA membership. Conferences like this provide valuable opportunities to learn, share ideas, and build relationships that support your work as a music teaching professional.

At gatherings like this, the music teacher becomes the music student. Through sessions, conversations, and performances, you gain new ideas, fresh perspectives, and practical tools to bring back to your studio. The exchange of knowledge and encouragement among colleagues strengthens your teaching, benefits your students, and helps sustain the future of our profession. As you return to your local communities, we hope you will continue to think creatively of how to foster growth and engagement within your local professional network.

As you think about continuing your professional growth and expanding your network, we invite you to join us for the 2027 MTNA National Conference in St. Louis, Missouri, April 2–6. The conference will feature more than 100 informative sessions, inspiring master classes, and a vibrant exhibit hall showcasing the latest music, products, and innovations. The conference will open Friday evening with a concert by the Grammy Award winning choral ensemble Chanticleer, and acclaimed pianist Tom Borrow will round out the performances with a Monday evening recital.

The 2027 MTNA National Conference promises to be an inspiring celebration of music, education, and community. Mark your calendar now and watch for more details at mtna.org.

Again, welcome to the Washington state conference. Please enjoy every moment of it.

Sincerely,

A handwritten signature in black ink that reads "Kevin Chance".

Kevin Chance, NCTM
President

A handwritten signature in black ink that reads "Brian Shepard".

Brian Shepard
Chief Executive Officer



WELCOME FROM THE WSMTA PRESIDENT Kira Miller, NCTM

Welcome Colleagues and Friends!

It is my pleasure as president to welcome you to the 2026 WSMTA Conference at Central Washington University in Ellensburg. Music is at the core of what we do and over these three days we will each reconnect with friends, forge new relationships, engage in sessions, recitals and concerts, among countless other moments.

We are excited to be joined by the Bardin-Niskala Duo as our conference guest artists, with cellist An-Lin Bardin and pianist Naomi Niskala. Washington State Commissioned Composer Miguel del Aguila's new work for piano, "Invisible Variations" will be premiered. Students from across the state will perform in the Washington Winners Concert, Young Composers Concert and five Honors Recitals.

The conference is also a time to recognize our leadership teams, our chapters, and our members. Conference Co-chairs Carol Cross, NCTM and Dorothy Bauer, with Kirsten Carlson, Kathy Mortensen, Nick de los Santos, Colleen Hunter, NCTM, Jani Stoehr, NCTM, and other volunteers have put together an exceptional and memorable conference. Thank you to this team and the long list of volunteers who help make this conference a reality. You are appreciated for all of the work that you do.

The WSMTA Conference is a time to gain knowledge and inspiration from the many sessions and recitals, build connections at the sponsored coffee breaks, banquet and events such as trivia night, rejuvenate for the new year, and celebrate how Music is Central.

I look forward to connecting with each of you.

Sincerely,

Kira Miller, NCTM
WSMTA President



Conference Acknowledgements

2026 STATE CONFERENCE CHAIRS

Carol Cross, NCTM
Dorothy Bauer

CONFERENCE COMMITTEE

Kathy Mortensen, Colleen Hunter, NCTM, Kirsten Carlson, Jani Stoehr, NCTM, Nick De Los Santos

ADVERTISING, VENDORS, SPONSORS, EXHIBITORS, REGISTRATION, AND WEBSITE CHAIR

Kirsten Carlson

CONFERENCE BOOKLET CHAIR

Samantha Yeung

STATE HONORS RECITALS CHAIRS

Amanda Harris
Jane Melin, NCTM

WASHINGTON WINNERS RECITAL CHAIR

Jason Kuo, NCTM

COMMISSIONED COMPOSER CHAIR

Louise Nedela, NCTM

YOUNG COMPOSERS PROJECT RECITAL CHAIR

Frances Goei, NCTM

MORE MUSIC CHAIR

Jeffrey Snedeker

APPRECIATION CHAIR

Colleen Hunter, NCTM

AUDIO/VISUAL CHAIR

Ryan Worswick

BANQUET/CATERING CHAIR

Dorothy Bauer

CHECK-IN CHAIR

Mayalisa Bordenkircher

COMMUNICATIONS

Kaitlin Mitchell

FLOWER CHAIR

Margo Cox, NCTM

HOSPITALITY/TRIVIA NIGHT

Leah Terrill

LESSON WITH THE ARTIST CHAIR

Jani Stoehr, NCTM

WORKS IN PROGRESS CHAIR

Nick De Los Santos

LOCAL AREA CHAIR

Marilyn Wilbanks, NCTM

MONITORS CHAIR

Lois Rhoads

PACKET & SIGNS CHAIR

Chris VanBuskirk

PRESENTER CHAIR

Erin Oliver, NCTM

SILENT AUCTION & WINE RAFFLE CHAIRS

Naomi Johnson, NCTM
Patti Robertson, NCTM

STUDENT ARTWORK CONTEST CHAIR

Nick De Los Santos

WSMTA STUDENT ARTWORK CONTEST

WSMTA is excited to announce the results of the first annual Student Artwork Contest, celebrating the creativity and hidden talents of our students! Students were invited to submit original artwork inspired by the theme of the 2026 WSMTA Conference, *Music is Central*.

Winner: Perrie Lam



Music is Central!
Perrie Lam, 12
Student of Yelena Balabanova

Runner Up: Justin



Where Music Brings Us Together
Justin, 10
Student of Nicole Kim

Honorable Mentions

COVER ARTIST STATEMENT

This cover design is inspired by Washington State and the idea that everything can be connected through music. The composition uses a map of Washington State filled with recognizable landmarks to represent both urban and rural areas, as well as the big contrasts of day and night, rain and shine.

This artwork is created using watercolor, which allows soft blending and natural flow. A heart is placed at the center to symbolize that music is like a heartbeat. It fully illustrates how music is important like our hearts. To further emphasize unity and celebration, a red ribbon is added across the design, tying the elements together and providing a formal sense of ceremony. Below the heart is Central Washington University, the location of the annual conference.

The musical selection wrapping around that I chose is “Ode to Joy” by Ludwig van Beethoven. Two different versions of Ode to Joy are included: a simple arrangement at the front and an advanced interpretation on the reverse side. It reflects the thoughtful way teachers select music to each student’s level and pace.

Day or Night. Rain or Shine. Near or Far. Music is Central.

This poem I have created is a heartfelt tribute to music teachers, especially my piano teacher Dr. Yelena Balabanova.

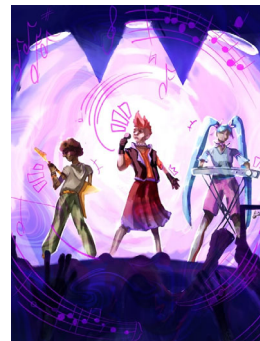
Through this art work, I wanted to express gratitude to teachers’ hard work and dedication to the future of their students. Music is central not only in this design, but in the lives it touches. — *Perrie Lam*



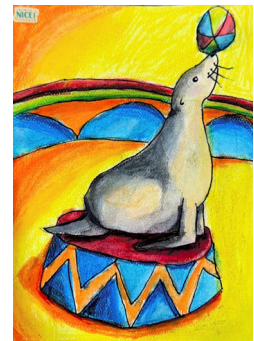
Music All Around!
Aarya Wagh, 11
Student of Samantha Yeung



Characters in Color
Elin Stiles, 10
Student of Anne Marie Corey



Music for All
Nina Gonzalez, 15
Student of RoseMarie Tamburri



Drawing 13
Auro Ashok Kumar, 10
Student of Karin Weekly



Rainbow Band
Berenice Niekamp, 9
Student of Mengyiyi Chen

WSMTA BOARD OF DIRECTORS RESOLUTION

WSMTA Board of Directors Resolution to Recognize the Contribution of Independent Music Teachers to the Music Education of Washington State

WRITTEN BY RYAN WORSWICK

WHEREAS, The human endeavor of music is progressive, a generational chain of great teachers, composers, and performers striving to discover and preserve the broadest possibilities of musical sensitivity and execution, in search of the sounds of being human across the ages; and

WHEREAS, The study of music immerses the student in a grand human project, taking us back in time to explore the culture and qualities of musical greatness we inherit from the past, the better to understand who we've been, who we are, and who we may yet become; and

WHEREAS, For centuries these explorations have been shepherded by independent music teachers, with every great composer or performer met first by a great teacher, forming direct links of teacher and student through many of the giants we know and love, including a local connection between the Polish composer Frédéric Chopin at the beginning of the 19th century all the way to Washington's own Margaret Saunders Ott (1920 - 2010), who spent decades training professional pianists while teaching at Washington State University, Gonzaga University, and Whitworth University; and

WHEREAS, The challenge of a musical education provides our youth the opportunity to practice facing their fears, to see how focus, dedication, and persistence bear fruit over time, and to learn how to break down complexity to a point of epiphany; and

WHEREAS, The fundamental skill of interpretation, connecting with and breathing life into notes printed on a page to provoke an emotional reaction, is rooted and grown from the depths of a player's capacity to empathize, a vital social component that often seems at risk of evaporation; and

WHEREAS, An independent music teacher is often one of the most memorable, supportive, and important adults in a child's early life, regardless of whether their musical journey takes them to the heights of professionalism, or simply connects them to humanity's universal language, often the first recourse for people in the face of turmoil and chaos; and

WHEREAS, Today's independent music teachers are: private studio teachers, small business owners, authors, internationally renowned performers, adjudicators, college professors, retired school teachers, college students, and even high school students, and today's music students are more varied by orders of magnitude, and

WHEREAS, Independent music teachers spend thousands of hours every year volunteering with professional organizations to provide ample performance and educational opportunities wherein students are able to share their discoveries with the community at large, from senior centers to churches, choirs to school bands, and festivals of all stripes to competitions of the same; and

NOW, THEREFORE, BE IT RESOLVED, That the Washington State Music Teachers Association Board of Directors recognize the significant artistic and cultural contributions that All Independent Music Teachers have made to the music education of Washington State.

TABLE OF CONTENTS

4-5	Welcome from the WSMTA President Welcome from MTNA
6	Student Artwork Contest
7	WSMTA Board of Directors Resolution
8-9	An-Lin Bardin and Naomi Niskala, Conference Guest Artists
10	Miguel del Aguila, Commissioned Composer of the Year
11	More Music Collegiate Performances
12-14	Saturday Schedule of Events
15	State Honors Recital No. 1 (Piano)
16	State Honors Recital No. 2 (Piano)
18-19	Bardin-Niskala Duo Concert
20-21	Schedule At-A-Glance
22-24	Sunday Schedule of Events
25	State Honors Recital No. 3 (Piano)
26	General Meeting Agenda
27	Young Composers Project Concert
28	Works in Progress
29	Washington Winners and Commissioned Composer of the Year Concert
30-32	Monday Schedule of Events
33	State Honors Recital No. 4 (Vocal & Instrumental)
34	Lesson with the Artists
35	State Honors Recital No. 5 (Piano)
36-38	Who's Who of WSMTA

CONFERENCE GUEST ARTISTS



Bardin-Niskala Duo

The Bardin-Niskala Duo is a cello and piano duo and a non-profit 501(c)(3) arts organization. Cellist An-Lin Bardin is Chinese American, and pianist Naomi Niskala is Japanese American, and they formed the Bardin-Niskala Duo in January 2021 in response to the sharp rise in anti-Asian violence and hate crimes across the United States.

The Bardin-Niskala Duo commissions ALAANA (African, Latinx, Asian, Arab, and Native American) and other under-represented composers, asking them to use their music to address their sense of identity by composing a piece inspired by a folk song and/or children song that is central to the composer's sense of cultural or racial belonging. Through the commissioned works and the stories told through the music, the Duo endeavors to foster empathy and compassion in the world.

The Bardin-Niskala Duo's programs are offered in concert halls, middle and high schools, universities and community centers, and range from traditional concerts to more informal performances mingled with open dialogue between the Duo and audience members. Both active educators and passionate teachers, An-Lin and Naomi work with students (school-age and college) in master classes, workshops, and discussions, where they are able to discuss more intricately their Commissioning Project, the commissioned works, and the importance of encouraging and promoting cultural and racial awareness through humanizing and personalizing people's stories and experiences.

To read more about our work and the composers we've commissioned, please visit www.Bardin-Niskala-Duo.com.

CONFERENCE GUEST ARTISTS

An-Lin Bardin, cello

Described as “stunning,” by the New York Times, cellist An-Lin Bardin currently teaches cello and chamber music at Sarah Lawrence College, freelances in the greater NYC area, and moonlights as a math tutor. As the cellist of the Vinca Quartet, she performed extensively throughout Europe and the US, including Carnegie’s Weill Hall, Aspen, and Vilar Performing Arts Center.

Bardin’s performances have been broadcast on Deutschlandradio and WNYC. She is a laureate of several international quartet competitions, including the Paolo Borciani Quartet Competitions in Reggio Emilia, Italy, and the Fischhoff, the Plowman, the Yellow Springs, Chesapeake, and the International Chamber Music Ensemble Competitions in the United States. She served as Artist-in-Residence for the Perlman Music Program in Florida.

A recipient of a DAAD fellowship which enabled her to work with the Vogler String Quartet in Stuttgart, Germany, Bardin also studied extensively with Gunter Pichler and Valentin Erben of the Alban Berg Quartet, Walter Levine, Heime Mueller, and the Artemis String Quartet under the auspices of the ProQuartet Odyssee Program in Paris, France, and with the Emerson String Quartet through the Carnegie Hall Chamber Music Workshops.

She was a graduate assistant to the Takacs Quartet at the University of Colorado at Boulder for two years as part of the graduate quartet residency program. A strong proponent of music education, Bardin was a founding member of Music Haven, an intensive mentorship program serving youth from low-income neighborhoods in New Haven, Connecticut. She also founded two ongoing music educational programs in rural Washington State through the Gorgeous Sounds Residency Program.

Raised in California by two nuclear physicists, Bardin began her cello studies at the age of eight with Irene Sharp. She holds a B.S. from Yale University in Geology and Geophysics, and an M.M. from the Yale School of Music, where she studied with Aldo Parisot and was a member of the Grammy-Award-winning Yale Cellos. Bardin co-directs the Winterhaven Chamber Music Retreat for adult amateur musicians.

Naomi Niskala, piano

A soloist and chamber musician who has appeared in Europe, North America, Russia, Israel, Thailand, and Japan, pianist Naomi Niskala's performances have been broadcast on BBC Radio, Deutschlandradio, RTV Germany, and NPR's Performance Today. Niskala performs regularly with Spectrum Concerts Berlin, one of Germany's leading chamber organizations, and has also recorded two discs with them. Recent performance highlights include the San Francisco Symphony Chamber Series at Davies Symphony Hall, soloist with the St. Petersburg Chamber Philharmonic of Russia, and solo and chamber performances with Spectrum Concerts Berlin in the Philharmonie Kammermusiksaal of Berlin, Carnegie's Weill Hall, in Thailand, and in Kosovo.

Her release of the only complete recordings of American composer Robert Helps's solo piano works on two discs with Albany Records in 2007 was met with high acclaim, and she has also recorded piano chamber works of Robert Helps and Ursula Mamlok with Spectrum Concerts Berlin for two discs on Naxos, as well as the world premiere of Mamlok's 2015 quintet "Breezes" for Bridge Records. Niskala is featured in the 2013 German rbb television documentary entitled Sehnsucht Musik (Searching for Music), documenting the work of four members of Spectrum Concerts Berlin towards improving the harsh conditions for young musicians at a music school located in Prizren, Kosovo.

Born to Japanese/Finnish-American parents, she began studying piano at the age of three, raised in Rochester, New York and then later in Tokyo, Japan. Niskala holds degrees from the Yale School of Music, Stony Brook University, and the New England Conservatory of Music, where she studied with Claude Frank, Gilbert Kalish, and Patricia Zander. She also worked with pianists Leon Fleisher, Menahem Pressler, Peter Serkin, and Maria Louisa Faini, and violinists Louis Krasner and Eugene Lehner.

Niskala is currently Associate Professor of Music at Susquehanna University in Pennsylvania where she teaches piano and theory, and leads a summer chamber music exchange program to Japan. Niskala co-directs the Winterhaven Chamber Music Retreat for adult amateur musicians, and she also teaches at the Interlochen Arts Camp in the summer.

2026 WSMTA COMMISSIONED COMPOSER OF THE YEAR

Miguel del Aguila

Three-time Grammy-nominated American composer Miguel del Aguila (b. Montevideo, 1957) is a leading voice in contemporary classical music, known for his distinctive and innovative style deeply influenced by his Latin American roots. As a vital force in 20th and 21st-century music, he has written over 140 works that bring new diversity to the contemporary chamber and orchestral repertoire. His rhythm-driven, dramatic compositions blend modernity with nostalgic elements of his South American heritage, offering a fresh perspective on classical music.

His works have been performed by thousands of soloists, ensembles, and orchestras worldwide and enjoy hundreds of live performances yearly. Recorded on 66 CDs, his music has been praised as “brilliant and witty” (New York Times), “sonically dazzling” (Los Angeles Times), “expressive and dramatic” (American Record Guide), and “blessed with a high degree of musicality, a mature, assured voice, uniquely accessible yet adventurous” (Opera Now Magazine, UK). His recordings have frequently topped the Billboard Classical Charts, including his 2024 album *Windsync Plays Miguel del Aguila*, which reached #1. His recording of *Conga-Line in Hell* with the New Juilliard Ensemble, Camerata de las Americas, and Joel Sachs is approaching half a million streams worldwide.

In 2010, his album *Salon Buenos Aires* earned two Latin Grammy nominations, for the album and for his work *Clocks*.

In 2015, his concerto *Concierto en Tango*, (JoAnn Falletta/ Buffalo Philharmonic), earned him a third Grammy nomination. Aguila has also received the prestigious Kennedy Center Friedheim Award, New Music USA’s Music Alive and Magnum Opus Awards, Lancaster Symphony Composer of the Year, and The Copland Foundation awards, among others.

Over 100 orchestras across the Americas and Europe perform his music, including the Norwegian Radio Orchestra, Brandenburgisches Staatsorchester, Royal Concertgebouw, and Los Angeles Chamber Orch, and by the Kiev, Odessa, Heidelberg, Royal Liverpool, Mexico City, Buffalo, Chicago, and Louisiana Philharmonics; the BBC Symphony, Toronto, Nashville, Seattle, Albany, San Antonio, Long Beach, Fort Worth, Santa Barbara, Reykjavik, Caracas, Puerto Rico, and São Paulo Symphonies, among many others. Conductors who have performed his works include Leonard Slatkin, JoAnn Falletta, Giancarlo Guerrero, Marin Alsop, Carlos Miguel Prieto, Lukas Foss, Gerard Schwarz, Jorge Mester, Guillermo Figueroa, David Allan Miller, Miguel Harth-Bedoya, Andrew Litton, Eckart Preu and Dirk Meyer.

Notable chamber ensembles performing his music include the Sphinx Virtuosi, Windscape, Windsync, Pittsburgh New Music Ensemble, SOLI, Chicago Philharmonic Chamber Players, New Juilliard Ensemble, Eroica Trio, Philadelphia Chamber Ensemble, Collegium Novum Zürich, Imani Winds, FifthHouse, Invoke, Cuarteto Latinoamericano, and the Dalí, Pacifica, and Verona string quartets. His works have been featured at major festivals such as Aspen, Breckenridge, Cabrillo, Chautauqua, Ravinia, Oregon Bach Festival, Bregenz Festspiele, Wiener Festwochen, and Prague Spring.

A sought-after collaborator and curator, Aguila is the 2025 Composer in Residence at Lynn University & Philharmonia Orchestra and at Du Vert A L’Infini Festival/PluComp in France. After Composer in Residence positions with Indianapolis Chamber Orch, ISU Contemporary Music Festival, Ensemble Storstrøm Denmark, Orchestra of the Americas, New Mexico Symphony, Fresh Ink, CTSummerfest, Talis, and Chautauqua Festivals; and short residences at Dartmouth College, The Juilliard School, University of Michigan, University of Illinois, Vanderbilt and Lynn Universities.

www.migueldelaguila.com

Miguel del Aguila’s commissioned work will be performed by pianist Dr. Lark Powers, NCTM.

Dr. Lark Power’s biography can be found online at www.wsmta.org/teacher-programs/commissioned-composer.

MORE MUSIC

Collegiate Student Lunchtime Performance Sessions

Performances subject to change. Check www.wsmta.org for More Music performance updates!

SATURDAY LUNCH

Dr. Mengyiyi Chen, piano

Ballade in G minor, Op. 27 (1897) by Mel Bonis (1858-1937)

Mélanie Hélène ("Mel") Bonis was a prolific French composer who composed over 300 piano pieces. Her Ballade in G minor, Op. 27 is a sophisticated hybrid ternary form that masterfully intertwines the cyclic principles of her mentor, César Franck, with the evocative, shifting colors of early French Impressionism. The work is characterized by its psychological depth, navigating through a somber G-minor narrative that escalates into dramatic, chromatic climaxes before returning to a hauntingly introspective conclusion. Its rhapsodic structure allows for a high degree of expressive freedom while maintaining a rigorous motivic unity. This masterpiece is ideally suited for advanced to collegiate-level students. Dr. Mengyiyi Chen is a pianist and educator holding a DMA in Piano Performance from the University of North Texas and an MM from the Manhattan School of Music. Her debut album, Mel Bonis: Piano Solo Volume 1 (Toccatà Label), received high praise from major music magazines. Her students are top prize winners in regional and international competitions.

SUNDAY LUNCH

Carter Mitchell, euphonium

Anemoi: The Gods of the Wind (2021) by Thomas Ruedi (b. 1969).

- I. Zephyros
- II. Euros
- III. Boreas
- IV. Notos

Thomas Ruedi is a Swiss euphonium artist and composer. Anemoi (The Gods of the Wind) for unaccompanied euphonium is inspired by Greek mythology and its four seasonal gods of the winds. Carter Mitchell is a senior at Washington State University earning a bachelor's degree in music performance for euphonium as well as a bachelor's in applied mathematics. He has played the euphonium for over 10 years and has enjoyed opportunities to compete at the national level for the 2026 MTNA Young Artist Brass competition and at the 2024 Northwest Regional Tuba Euphonium Conference, in addition to international competitions like the 2025 International Tuba Euphonium Festival and the 2024 Leonard Falcone International Euphonium & Tuba Festival. After graduation, he will pursue a master's degree in mathematics while auditioning for regional euphonium and trombone positions.

Flora Cummings, viola

Salix Lasiandra Sings (2024) by Melia Watras

Distinguished violist and composer Melia Watras currently holds the Ruth Sutton Waters Endowed Professorship and is Professor of Viola at the University of Washington. Salix Lasiandra Sings for solo viola was composed for Flora Cummings and the composer writes "The willow sings to the fiddler." Flora Cummings is from Seattle and has just graduated from the University of Washington, studying viola and ecology. She has soloed with numerous local ensembles including the Seattle Collaborative Orchestra, UW Symphony, and Leonore Chamber Orchestra. As well as orchestral and solo music, Flora is an enthusiastic chamber music player and loves Scottish fiddle music and Gaelic song. In 2024, she won the prestigious Silver Pendant singing competition for Scottish Gaelic learners at the Royal National Mòd in Scotland. She will be pursuing a Master's in viola performance at the Royal Academy of Music in the autumn. In 2026, Flora was the Young Artist winner for Washington State and the Northwest Division.

MONDAY LUNCH

Central West Quartet: Lesly Cadena, violin; Jeromy Neese, violin; Tyler Jones, viola; Gabe Seery, cello

Merry Go Round of Life from Howl's Moving Castle (2004) by Joe Hisaishi (b. 1950)

Japanese filmmaker and composer Joe Hisaishi (Mamoru Fujisawa) has composed music for over 100 films, known especially for his work in animation. His music draws on a wide range of musical styles. Howl's Moving Castle is his most successful commercial film and "Merry Go Round of Life" has over 140 million streams on Spotify. The Central West Quartet is a chamber ensemble studying at Central Washington University. Formed during their first year together, they plan to continue playing chamber music together until they graduate and hope to inspire people of all ages by incorporating a variety of genres in their repertoire.

Donut Friday Quartet: Ellie Brower, Quentin Chamberlain, Chone Ewell, Joshua Quintana, horns

Horn Quartet (2023) by Michael Mikulka (b. 1985)

American horn player and composer Michael Mikulka (b. 1985) draws on his Armenian roots and wide-ranging performing experiences for his compositions, and his Horn Quartet is a great demonstration of his musical style. Named for the CWU Horn Club's primary fundraising activity, the Donut Friday Horn Quartet is made up of music majors at Central Washington University. Their eclectic interests in performance, education, and composition encourage them to explore varied musical styles. Member Quentin Chamberlain was the MTNA Senior Brass national winner in 2025.

CONFERENCE SCHEDULE OF EVENTS

Saturday, June 27



SCAN TO ACCESS THE
SCHEDULE ONLINE

www.wsmta.org

- 9:00 am** **Welcome with Coffee, Tea, and Treats**
McIntyre Rotunda
- 9:00 am-6:00 pm** **Check-In Desk**
McIntyre Rotunda
- 10:00 am-5:00 pm** **Silent Auction**
McIntyre Hall
- 11:00 am-12:00 pm** **Honors Recital No. 1 (Piano)**
McIntyre 175 / Recital Hall
- 11:00-11:45 am** **Mengyiyi Chen**
Shades of Childhood: The Poetic World of Mel Bonis's Scènes enfantines
McIntyre 150 / Band Room
- By analyzing this set of piano miniatures, Dr. Chen reveals the childhood scenes depicted in Bonis' Scènes enfantines, offering late beginner and early intermediate pianists new insights into expression and musical storytelling, while providing teachers practical approaches for guiding students in practice and performance.
- 11:00-11:45 am** **Kira Miller, NCTM, Rhonda Snook, and Marina Munter, NCTM,**
Taking Back Your Power and Finding Strength Within
McIntyre 153 / Choir Room
- Trauma can look different for everyone, but people in abusive relationships often may suffer from issues of self-esteem, identity crisis and anxiety. Kira Miller, NCTM, Rhonda Snook and Marina Munter, NCTM, will share their personal experiences in rediscovering their identity outside the abusive relationship, rebuilding self-esteem, managing the intense stress and using their expertise with music as a powerful tool for personal healing and coping.
- 12:00-1:00 pm** **Box Lunch**
McIntyre Rotunda
- LUNCH MEETINGS**
Combined Music Artistry Program (MAP) Chairs and Visiting Artist Meeting
Facilitated by WSMTA Music Artistry Program Chair Samantha Yeung and Visiting Artist Chair Selina Chu, NCTM
McIntyre 144J / Faculty Lounge
- MORE MUSIC**
Mengyiyi Chen, piano
Ballade in G Minor, Op. 27 (1897) by Mel Bonis (1858-1937)
McIntyre 150 / Band Room
- 1:00-1:45 pm** **Sarah Silvia, NCTM and Eleanor Gummer**
Clara Schumann: Romantic Trailblazer
McIntyre 150 / Band Room
- Meet Clara Schumann (aka Sarah Silvia) and Frau Freulich, a journalist from Dusseldorf, Germany (aka Eleanor Gummer). Hear about her childhood and her scandalous courtship with composer Robert Schumann. Clara will reveal her innovative recital programming formula and her gender-defying career. As Clara Schumann faced Robert's illness, she grappled with budgeting, mothering seven children and performing to make ends meet. Johannes Brahms became a devotee of the Schumann family, involved in Clara's life, assisting with family matters and supplying emotional support. Uncover the emotional cost and consequences of her early widowhood, large family and consequent professional commitments.

1:00-1:45 pm**Dilyara Oliver**

Healthy Piano Technique: An Introduction to the Taubman Method
McIntyre 153 / Choir Room

This presentation offers an introduction to the Taubman Approach and explores how its principles support healthy, efficient, and effective piano teaching. Dorothy Taubman's work is centered on understanding body mechanics and how the fingers, hand, and forearm function as a coordinated unit. By emphasizing natural alignment and coordinated movement, teachers can help students reduce tension, develop reliable technique, and play with greater ease and control.

2:00-2:45 pm**Roger McVey, NCTM**

The Forbidden Pleasures of Playing, Teaching, and Creating Transcriptions
McIntyre 150 / Band Room

Once looked down upon as frivolous or 'less serious repertoire', transcriptions are actually fun, appealing, and useful in developing artistry at any level. Historically, piano transcriptions were created by pianists such as Franz Liszt either as appealing concert pieces based on popular tunes, or else to promote other composers' works that were deserving of attention. This presentation will explore the challenges of teaching and playing transcriptions. Dr. McVey will play examples from the (vast) repertoire, and discuss his own experience of creating transcriptions from rock, pop, and video game music.

2:00-2:45 pm**Anna Schultz**

Applying Montessori Methods to Teach Students with ADHD, Disabilities, & Preschool Age
McIntyre 153 / Choir Room

Participants will learn the core principles of the Montessori method and why it is so effective for young learners and students with ADHD and disabilities. The presentation will demonstrate the learning process using Montessori teaching tools, tactile activities, and hands-on games that naturally support focus and attention. Attendees will also explore strategies that help students remember musical concepts more easily through movement, repetition, and sensory engagement.

2:45 pm**Coffee, Tea, and Treats**

Sponsored by the Pullman Chapter and the Lynden Chapter
McIntyre Rotunda

3:00-4:00 pm**Honors Recital No. 2 (Piano)**

McIntyre 175 / Recital Hall

3:00-3:45 pm**Representation and Advocacy Committee**

Travel the World through Music
McIntyre 150 / Band Room

Welcome to our inaugural voyage! We'll be traveling around the world through music, sampling local sounds and inspiration. Our trip will start from home with a Washingtonian composer, then continue on to visit China. Picture yourself walking along the Great Wall of China while we hear local music, new and ancient. Next, we simply must visit Egypt! The iconic pyramids belong on everyone's bucket list. Our musical travels will encompass the British Isles, and more besides! If you have music you'd like to share with us, we'll save some time for additional compositional destinations!

4:00-4:45 pm**Leann Osterkamp He**

The Art of Subtraction: Accompanying at the Highest Level
McIntyre 150 / Band Room

Collaborative artistry requires a multi-disciplinary approach of being able to orchestrate, transcribe, reduce, and "re-compose" a score to educate young musicians, create artistry and maximize efficiency in rehearsal with other professionals, and accurately and musically realize a performance of a work. Drawing on years of professional collaborative work, Dr. He will show examples of how playing less and/or reimagining the score is crucial in concerto accompaniment, vocal accompaniment, competition accompaniment, and more.

CONFERENCE SCHEDULE OF EVENTS

4:00-4:45 pm

Ryan Worswick

Nuts and Bolts of Teaching Music Online
McIntyre 153 / Choir Room

This is a Zoom focused presentation that will cover the basics of establishing your online studio, from digital settings, through equipment, student setup, and the staging of the physical side of your efforts so that your teaching style is unlocked online. Time permitting we will also cover basic considerations of recitals, group classes, and duets online.

5:00 pm

Banquet and Wine Raffle

Sue Lombard Hall

8:00 pm

Guest Artist Concert: Bardin-Niskala Duo

McIntyre 175 / Recital Hall

9:00 pm

Post-Concert Reception

Sponsored by the Mt. Rainier Chapter and South King County Chapter
McIntyre Rotunda

2026 WSMTA CONFERENCE FACILITIES GENEROUSLY PROVIDED BY



Department of Music

2026 WSMTA CONFERENCE SUPPORTERS



Eastside Chapter
Kitsap County Chapter
Lynden Chapter
Pullman Chapter

Seattle Chapter Simon-Fiset Suite of Competitions
South King County Chapter
Yakima/Ellensburg Chapter
WSMTA Teacher Enrichment Fund

STATE HONORS RECITAL NO. 1

Saturday, June 27, 2026 • 11:00 am

WSMTA State Conference • Central Washington University • Ellensburg, WA

- Scènes d'Enfants, Jeu No. 3 Federico Mompou
Meena McConaha, 10, student of Mary Grant, NCTM
 Kitsap County Chapter
- Sonata No. 9 in D Major, K. 311, I. Allegro con spirito Wolfgang Amadeus Mozart
Ryan Zhu, 13, student of Nicole Kim, NCTM
 Lake Washington Chapter
- Album for the Young, Op. 68, XII. Knight Rupert Robert Schumann
Autumn Redman, 14, student of Lois Rhoads
 Okanogan County Chapter
- Prelude Op. 43, No. 1 Reinhold Glière
Charlotte Campbell, 14, student of Carol Cross, NCTM
 Yakima-Ellensburg Chapter
- Arabesque No. 1 Claude Debussy
Maya Rogers, 14, student of Susan Luebeck
 Gig Harbor Chapter
- Impromptu in C-sharp Minor, Op. 28, No. 3 Hugo Reinhold
Sylus Potter, 15, student of Tracy Henriod
 Clarkston/Lewiston Chapter
- The Cat and the Mouse Aaron Copland
Hannah Schroeder, 15, student of Debra Bakland
 Walla Walla Chapter
- Etude in C Minor, Op. 2, No. 3 Sergei Prokofiev
Alec Rodriguez, 17, student of Irene Bowling, NCTM
 Kitsap County Chapter
- Scherzo No. 3 in C-sharp Minor, Op. 39 Frédéric Chopin
Phoebe Goh, 17, student of Ramona Allen
 Olympia Chapter
- Sonata No. 6 in A Major, I. Allegro moderato Sergei Prokofiev
Collin Carlson, 17, student of Maria Sier, NCTM
 Snohomish County Chapter
- Preludes, Book II, VI. Général Lavine – eccentric Claude Debussy
Elsa Jonson, 18, student of Kay Zavislak, NCTM
 Bellingham Chapter

STATE HONORS RECITAL NO. 2

Saturday, June 27, 2026 · 3:00 pm

WSMTA State Conference · Central Washington University · Ellensburg, WA

- Pour le Piano, I. Prélude Claude Debussy
Cassandra Mae Ramos, 9, student of Peter Mack, NCTM & Marissa Rebadulla Ramos
 Seattle Chapter
- Seven Variations on Ukrainian Folk Tune Dimitri Kabelevsky
Bryant Bui, 11, student of Jensina Oliver, NCTM
 Edmonds Chapter
- Nocturne in E-flat Major, Op. 9, No. 2 Frédéric Chopin
Juliette Martinez, 12, student of Frances Goej, NCTM
 Whidbey Island Chapter
- Sonata in C Minor, K. 115 Domenico Scarlatti
Grace Wang, 14, student of Jing Chen
 Tri-City Chapter
- A Breeze From Alabama Scott Joplin
Jozef Kocaj, 14, student of Roxanne Kar
 Edmonds Chapter
- Novelette No.2 in B-flat Minor Francis Poulenc
Katelyn Denq, 14, student of Renata Shumskaya
 Eastside Chapter
- Scherzo in C-sharp Minor, Op. 39, No. 3 Frédéric Chopin
Aaron Jin, 14, student of Randall Jackson, NCTM
 Snohomish County Chapter
- Danzas Argentina, Op. 2, No. 3 Alberto Ginastera
Runze Alex Wang, 15, student of Jing Chen
 Tri-City Chapter
- Polonaise-fantasy in A-flat Major, Op. 61 Frédéric Chopin
Isabel Yang, 16, student of Allan Park
 Edmonds Chapter
- Preludes, Book I, VII. Ce qu'a vu le vent d'Ouest Claude Debussy
Joel Rice, 17, student of Jensina Oliver, NCTM
 Edmonds Chapter
- Liebesträume Franz Liszt
Kairus Krejci, 18, student of Rebekah Poulson
 Wenatchee Valley Chapter

Fuel for Musicians!

Competing, teaching, performing, or cheering someone on?

Mention this ad during the WSMTA Conference and receive **10% OFF** your Winegar's order while the event is in town!



Two Locations to Serve You:
1013 E University Way
and **111 E University Way**

GUEST ARTIST CONCERT

Bardin-Niskala DuoAn-Lin Bardin, *cello*Naomi Niskala, *piano***Saturday, June 27, 2026 · 8:00 pm**

WSMTA State Conference · Central Washington University · Ellensburg, WA

*This is a program of works commissioned by the Bardin-Niskala Duo.
Each work is preceded by a video message from the composer.*

Breath Water Spirit (2022)	Michael-Thomas Foumai (b. 1987)
na poki'i (2024)	Leilehua Lanzilotti (b. 1983)
La Bestia: The Train of Death (2023)	Victor Marquez Barrios (b. 1977)
Almost Gone (2024)	Anthony Green (b. 1984)
HOME (2024)	Michi Wiancko (b. 1976)
I. Molto rubato, ad lib	
II. quarter = 82	
III. Soaring	
IV. quarter = 92	

About the Commissioned Composers and Works

Michael-Thomas Foumai (b. 1987) is a composer of contemporary concert music and educator with work focusing on storytelling and the history, people and culture of his Hawaii home. His music has been performed by Yannick Nézet-Séguin and the Philadelphia Orchestra, George Manahan and the American Composers Orchestra at Carnegie Hall, Osmo Vänskä and the Minnesota Orchestra, and in the summer of 2021, the Hawaii Symphony Orchestra presented a festival of his music with over 30 performances conducted by Rei Hotoda, Lidiya Yankovskaya, Sarah Hicks and JoAnn Falletta. Honors for his music have included a Fromm Foundation Grant from Harvard University, the MTNA Distinguished Composer of the Year Award, the Jacob Druckman Prize from the Aspen Music Festival, and three BMI composer awards. Foumai holds multiple degrees in music composition from the University of Hawai'i at Manoa (BM) and the University of Michigan (MM, DMA).

Michael writes, "*Breath Water Spirit* is about identity; the name ancient Hawaiians gave their new home and the name of my home. I hoped to capture this ancient natural spirit of the Hawaiian islands using the melodic contours of Hawaiian chant. These fragments of a

chant undergo a tumultuous passage through time that implies, at the start, the undiscovered Hawai'i island, the arrival of the Hawaiians, the ancient battles for unification under Kamehameha I, through the overthrow, and beyond."

Leilehua Lanzilotti is a Kanaka Maoli composer/sound artist. A "leading composer-performer" (New York Times), Lanzilotti's work is characterized by expansive explorations of timbre. Lanzilotti's practice explores radical indigenous contemporaneity, integrating community engagement into the heart of projects. By world-building through multimedia installation works and nontraditional concert experiences/musical interventions, Lanzilotti's works activate imagination around new paths forward in language sovereignty, water sovereignty, land stewardship, and respect. Uplifting others by crafting projects that support both local communities and economy, the work inspires hope to continue. Lanzilotti was honored to be a finalist for the 2022 Pulitzer Prize in Music for with eyes the color of time (string orchestra), which the Pulitzer committee called, "a vibrant composition... that distinctly combines experimental string textures and episodes of melting lyricism." As a 2023 SHIFT – Transformative

Change and Indigenous Arts Awardee, Lanzilotti is partnering with Te Ao Mana to provide free hula, language, and cultural workshops, creating space to come together as a community in the week leading up to their new opera project, Lili'u. These workshops are not just to create space to learn, but more to create space to come together through language and culture, and to celebrate the diaspora. For a complete bio, please visit <http://leilehualanzilotti.com>.

na poki'i weaves three fragments—the Hawaiian National Anthem, the fragmented beginning of a children's song usually sung as a round, and a birdsong—leaving them all unanswered. Hawai'i Pono'i translates as "Hawai'i's own [people]." The bandmaster of the Royal Hawaiian Band at the time, Henri Berger, wrote the melody. King Kalakaua himself wrote the words to the anthem, which became the new National Anthem (replacing He Mele Lahui Hawai'i, written by his sister, Lili'uokalani), and is still used today as Hawai'i's state song. In the second verse of Hawai'i Pono'i, Kalakaua encourages Hawai'i's own not only to look to their leaders, but also to those after them: the flowers / children of Hawai'i, affectionately referring to all of them as poki'i, or "closely related younger cousin[s], often spoken affectionately." The work asks if these different calls for connection will remain unanswered, leaving a sense of longing.

Venezuelan composer and guitarist **Victor E. Márquez-Barrios**, holds an extended catalog of works that includes compositions for a variety of solo instruments, numerous chamber ensembles, mixed choir, electronics, symphonic band, and symphony orchestra. His music has been performed, published, and recorded by soloists and ensembles from Latin America, the U.S., and Europe. Works by Márquez-Barrios have received performances at numerous international music festivals. An enthusiastic collaborator, Márquez-Barrios regularly works directly with performers and conductors, as well as with artists from a variety of disciplines beyond music. He has been awarded fellowships at some of the most prestigious artist residencies in the U.S., and has received grants and commissions from prominent institutions such as New Music U.S.A., the McKnight Foundation, the International Double Reed Society, and American Composers Forum. Márquez-Barrios holds M.M. and D.M.A. degrees in Composition from Michigan State University, as well as a Master's degree in Music Theory Pedagogy from MSU. He has served on the faculty at Michigan State, Kalamazoo College, Grand Valley State University, Alma College, and St. Lawrence University. Since 2015 and in parallel to his active career as a composer and guest lecturer, Victor Márquez-Barrios teaches music theory and composition as part of the faculty at Truman State University, where he is also the founding director of Uncommon Practice, the University's contemporary-music ensemble. During the summer, Márquez-Barrios teaches at Interlochen Arts Camp in Michigan.

About *La Bestia: The Train of Death*, Victor writes "As of February 2023, more than 7 million people (around 25% of the country's population) have left Venezuela since 2014, which makes it the largest-ever refugee crisis in Latin America. While the majority of displaced Venezuelans went to other countries in Latin America and the Caribbean, a significant amount of migrants have come to the U.S., through the dangerous Darién Gap between Colombia and Panamá, and eventually climbing aboard a freight train known as "La Bestia," or "The Beast." In recent years I have been both shocked and saddened to hear Venezuelan voices in numerous interviews and news reports about the migrant crisis at the U.S. border. Of those, the ones that strike me the most are the voices of children, traveling north by themselves or with their families. This composition is both an attempt to raise awareness about this humanitarian crisis, and a lullaby for those children, my personal way of encouraging them to keep dreaming despite the challenges, and to try and convince them (and myself) that the storm will pass, and that there will be calm and better days ahead for all."

The creative output of **Anthony R. Green** (b. 1984; composer, performer, social justice artist) includes musical and visual creations, interpretations of original and old or new repertoire works, collaborations, educational outreach, and more. Behind all of his artistic endeavors are the ideals of equality and freedom, which manifest themselves in diverse ways in a composition, a performance, a collaboration, or social justice work. As a composer, his works have been presented in over 25 countries across six continents by various acclaimed soloists and ensembles. Venues where his projects have been presented include Jordan Hall (Boston), Symphony Space and Lincoln Center (New York), Spike Gallery (Berlin), Cadogan Hall (London), and Elbphilharmonie (Hamburg), amongst many others. Green has performed in 12 different countries, premiering original works and working with student, emerging, and established composers, including Renée C. Baker and George Crumb. He is currently a visiting professor at the Royal Conservatoire of Scotland in Glasgow. For more information, please visit www.anthonrygreen.com.

"*Almost Gone* is based on *Sometimes I Feel Like a Motherless Child*. I chose this because I have been thinking quite a bit this past year about all the motherless children and mothers (and fathers) who have lost their children. While this spiritual is more symbolic than related to war, this deep feeling of utter hopelessness is universal. Yet the spiritual has words like "sometimes" and "almost", implying that there is hope. So, this piece begins with a brutal, war-like journey. It then transitions into the confession, and ends with a tiny glimpse of hope (which is actually also part of the many versions of this spiritual)."

A versatile and highly imaginative collaborator, performer, and composer, Japanese-American **Michi Wiancko** has been commissioned by artists and ensembles throughout the country, and both her creative and organizational work prioritize not only artistic discovery, but community resilience and social change. Recent commissions and projects include works for Boston Chamber Music Society, Parker Quartet, Ensemble Connect, SPCO, Aizuri Quartet, Jupiter Quartet, American Ballet Theater, Anne Akiko Meyers, Cleveland Lyric Theater, and Experiments in Opera, among many others. Michi performed her violin solo debuts with the New York and Los Angeles Philharmonics, and her recital debut in Weill Hall. She released her solo album, *Planetary Candidate* on New Amsterdam Records, and the solo violin works of Émile Sauret on Naxos. A passionate collaborator and advocate for new music, Michi has worked with Gabriela Lena Frank, Missy Mazzoli, Vijay Iyer, Judd Greenstein, William Brittelle, Qasim Naqvi, Jessie Montgomery, Laurie Anderson, Steve Reich, Emmanuel Ax, Silkroad, East Coast Chamber Orchestra, The Knights, A Far Cry, Alarm Will Sound, and International Contemporary Ensemble. Her mentors include Donald Weilerstein and the late violinist and composer Robert Mann. Michi is the director of Antenna Cloud Farm, a festival, retreat, and community organization, and she recently launched The Experimental Institute in collaboration with Mazz Swift and PaviElle French.

About *HOME*, Michi writes "In 1942, U.S. Executive Order 9066 called for the forced imprisonment of 110,000 of Japanese descent, including children, the elderly, and the sick, for the duration of the war. Often referred to as "relocation," the government stole from these families their homes, personal property, businesses, and livelihoods, and moved them into internment camps in remote inland locales. 70,000 of the incarcerated people were full American citizens, born and raised in the U.S., with zero charges of disloyalty amongst them. My piece for The Bardin-Niskala Duo is inspired by this community of folks who faced and endured this unimaginably painful time of fear, racism, violence, and injustice with courage and grace, and who found solace and resilience in their families and in their own cultural heritage."

SCHEDULE AT-A-GLANCE



SCAN TO ACCESS THE
SCHEDULE ONLINE
www.wsmta.org

Saturday

9:00 am

Welcome with Coffee, Tea, and Treats

McIntyre Rotunda

9:00 am-6:00 pm

Check-In Desk

McIntyre Rotunda

10:00 am-5:00 pm

Silent Auction

McIntyre Hall

11:00 am-12:00 pm

Honors Recital No. 1 (Piano)

McIntyre 175 / Recital Hall

11:00-11:45 am

Mengyiyi Chen

Shades of Childhood: The Poetic World of Mel Bonis's Scènes enfantines

McIntyre 150 / Band Room

11:00-11:45 am

Marina Munter, NCTM, Kira Miller, NCTM, and Rhonda Snook

Taking Back Your Power and Finding Strength Within

McIntyre 153 / Choir Room

12:00-1:00 pm

Box Lunch

McIntyre Rotunda

LUNCH MEETINGS

Combined Music Artistry Program (MAP) Chairs and Visiting Artist Meeting

Facilitated by WSMTA Music Artistry Program Chair Samantha Yeung and Visiting Artist Chair Selina Chu, NCTM
McIntyre 144J / Faculty Lounge

MORE MUSIC

Mengyiyi Chen, piano

Ballade in G Minor, Op. 27 (1897) by Mel Bonis (1858-1937)

McIntyre 150 / Band Room

1:00-1:45 pm

Sarah Silvia, NCTM and Eleanor Gummer

Clara Schumann: Romantic Trailblazer
McIntyre 150 / Band Room

1:00-1:45 pm

Dilyara Oliver

Healthy Piano Technique: An Introduction to the Taubman Method
McIntyre 153 / Choir Room

2:00-2:45 pm

Roger McVey, NCTM

The Forbidden Pleasures of Playing, Teaching, and Creating Transcriptions
McIntyre 150 / Band Room

2:00-2:45 pm

Anna Schultz

Applying Montessori Methods to Teach Students with ADHD, Disabilities, and Preschool Age

McIntyre 153 / Choir Room

2:45 pm

Coffee, Tea, and Treats

Sponsored by the Pullman Chapter and Lynden Chapter
McIntyre Rotunda

3:00-4:00 pm

Honors Recital No. 2 (Piano)

McIntyre 175 / Recital Hall

3:00-3:45 pm

Representation and Advocacy Committee

Travel the World through Music
McIntyre 150 / Band Room

4:00-4:45 pm

Leann Osterkamp He

The Art of Subtraction: Accompanying at the Highest Level

McIntyre 150 / Band Room

4:00-4:45 pm

Ryan Worswick

Nuts & Bolts of Teaching Music Online
McIntyre 153 / Choir Room

5:00 pm

Banquet and Wine Raffle

Sue Lombard Hall

8:00 pm

Bardin-Niskala Duo Concert

McIntyre 175 / Recital Hall

9:00 pm

Post-Concert Reception

Sponsored by the Mt. Rainier Chapter and South King County Chapter
McIntyre Rotunda

Sunday

8:00 am-5:00 pm

Check-In Desk

McIntyre Rotunda

8:00 am-5:00 pm

Silent Auction

McIntyre Hall

8:00

Coffee, Tea, and Treats

Sponsored by the Kitsap County Chapter

McIntyre Rotunda

9:00-9:45 am

Meg Krieg, NCTM and Karen Scholten

From Hymns to Harmonies: The Creative Art of Worship through Music

McIntyre 150 / Band Room

9:00-9:25 am

Chiao-Yu Wu

Evocation of Childhood in Piano Music, Painting, and Poetry

McIntyre 153 / Choir Room

9:30-9:55 am

Szu-Chia Lin

Notes Across Time: Selected Taiwanese Children's Piano Works and Musical Identity

McIntyre 153 / Choir Room

9:45 am

Coffee Top-Up

McIntyre Rotunda

10:00-10:45 am

Guest Artists: An-Lin Bardin and Naomi Niskala

Using Music for Social Change — Music that Fosters Empathy and Compassion Towards Others

McIntyre 175 / Recital Hall

11:00 am-12:00 pm

Honors Recital No. 3 (Piano)

McIntyre 175 / Recital Hall

11:00-11:45 am

Eleanor Gummer

The Historical Status of Women in Music

McIntyre 150 / Band Room

12:00-1:00 pm

Box Lunch

McIntyre Rotunda

LUNCH MEETUP

Sip & Stitch, Drink & Draw, Crafts & Coffee

Join us for a social lunch with friends!
Crafts encouraged but not required.
McIntyre 153 / Choir Room

MORE MUSIC

Carter Mitchell, euphonium

Anemoi: The Gods of the Wind by
Thomas Ruedi

Flora Cummings, viola

Salix Lasiandra Sings by Melia Watras

Izel Ochoa-Read, piano

Ballade No. 4, Op. 52 in F Minor by
Frédéric Chopin
McIntyre 150 / Band Room

12:45 pm

WSMTA Annual Member Meeting

McIntyre 175 / Recital Hall

2:00-2:45 pm

Jody Graves, NCTM

Make the Art of Your Work... A Work of
Art
McIntyre 150 / Band Room

2:00-2:45 pm

Rose Freeman, NCTM

MTNA Certification Toolbox
McIntyre 153 / Choir Room

2:45 pm

Coffee, Tea, and Treats

McIntyre Rotunda
Sponsored by the Seattle Chapter's
Simon-Fiset Suite of Competitions

3:00-4:00 pm

Young Composers Project Recital

McIntyre 175 / Recital Hall

3:00-3:45 pm

Melody Puller

Opening the Door to Student
Imagination through the Debussy
Preludes
McIntyre 150 / Band Room

4:00-5:30 pm

Guest Artists: An-Lin Bardin and Naomi Niskala

Works in Progress
McIntyre 175 / Recital Hall

4:00-4:45 pm

Ricardo de la Torre, NCTM

Essential Elements of Music Analysis as
a Resource in the Studio
McIntyre 150 / Band Room

5:00 pm

Dinner On Your Own

7:00 pm

Washington Winners Concert & Commissioned Composer of the Year Concert

McIntyre 175 / Recital Hall

8:30 pm

Post-Concert Reception

Sponsored by the Eastside Chapter
McIntyre Rotunda

8:30 pm

Trivia Night

McIntyre 153 / Choir Room

Monday

8:00 am-3:00 pm

Check-In Desk

McIntyre Rotunda

8:00 am-1:00 pm

Silent Auction

McIntyre Hall

8:00

Coffee, Tea, and Treats

McIntyre Rotunda
Sponsored by the Yakima Ellensburg
Chapter

8:00-8:45 am

Music Literacy Program (MLP) Chairs Meeting

Facilitated by WSMTA Music Literacy
Program Chair Melanie Stroud, NCTM
McIntyre 144J / Faculty Lounge

9:00-9:45 am

Susan Chan

Scenes from a Jade Window: A
Multimedia Lecture-Recital of New
Teaching and Performing Pieces by
Major Contemporary Chinese
Composers
McIntyre 150 / Band Room

9:45 am

Coffee Top-Up

McIntyre Rotunda

10:00-10:45 am

RoseMarie Tamburri

Improvise... with Words!
McIntyre 150 / Band Room

10:00-10:45 am

Jan Rowen Music, NCTM

Rhythmic Concepts and Movement
McIntyre 153 / Choir Room

11:00 am-12:00 pm

State Honors Recital No. 4 (V&I)

McIntyre 175 / Recital Hall

11:00 am-11:45 am

Greg Presley, NCTM

Training the Tactile Sense at the Piano
McIntyre 150 / Band Room

12:00-1:00 pm

Box Lunch

McIntyre Rotunda

LUNCH MEETINGS

Chapter Presidents and District Directors Meeting

Facilitated by Kira Miller, NCTM
McIntyre 144J / Faculty Lounge

MORE MUSIC

Central West Quartet

Merry Go Round of Life from *Howl's
Moving Castle* by Joe Hisaishi

Donut Friday Quartet

Horn Quartet by Michael Mikulka

Burrow Vision Quartet

Andante et Scherzo by Eugene Bozza
McIntyre 175 / Recital Hall

1:00-2:15 pm

Guest Artists: An-Lin Bardin and Naomi Niskala

Lesson with the Artists
McIntyre 175 / Recital Hall

1:00-1:45 pm

Jeff Snedeker

Improvisation Games: Expanding
Comfort Zones for Students and
Teachers
McIntyre 150 / Band Room

2:00-2:45 pm

Christina Liu, NCTM

Playing to Personalities: Enhancing
Learning Using Bartle's Player Types
McIntyre 153 / Choir Room

2:00-2:45 pm

Stephen Lewis, NCTM

The Mighty Wrist: Mastering the
Motions of the Wrist for Optimal Piano
Technique
McIntyre 150 / Band Room

*Silent Auction ends at 1:00 pm. Baskets
must be picked up by 3:00 pm.*

3:00-4:00 pm

State Honors Recital No. 5 (Piano)

McIntyre 175 / Recital Hall

*Thank you for attending the 2026
WSMTA Conference!*

CONFERENCE SCHEDULE OF EVENTS

Sunday, June 28



SCAN TO ACCESS THE
SCHEDULE ONLINE

www.wsmta.org

8:00 am-5:00 pm **Check-In Desk**
McIntyre Rotunda

8:00 am-5:00 pm **Silent Auction**
McIntyre Hall

8:00 am **Coffee, Tea, and Treats**
Sponsored by the Kitsap County Chapter
McIntyre Rotunda

9:00-9:45 am **Meg Krieg, NCTM and Karen Scholten**
From Hymns to Harmonies: The Creative Art of Worship through Music
McIntyre 150 / Band Room

As church pianists there are many opportunities to use creative hymn-playing techniques for congregational singing. The life of a church pianist can vary from week to week and season to season: you may be called upon to improvise background or transitional music or compose parts for vocalists and instrumentalists all in a limited time frame. Creating well-crafted accompaniments can be challenging, but you can learn to be a more unique and artistic accompanist, thereby serving your congregation in a more meaningful way.

9:00-9:25 am **Chiao-Yu Wu**
Evocation of Childhood in Piano Music, Painting, and Poetry
McIntyre 153 / Choir Room

Childhood has long served as a powerful motif across the arts, commonly associated with innocence, imagination, and nostalgia, but also with loss and melancholy. Composers such as Schumann, Debussy, Ravel, Fauré, and Glière evoked childhood not to compose for children, but to reflect on their past as adults. Similarly, painters including Renoir, Murillo, and Picasso, and poets such as Wordsworth, used childhood to explore memory, intimacy, and empathy. This research examines how childhood functions as an aesthetic strategy across artistic disciplines.

9:30-9:55 am **Szu-Chia Lin**
Notes Across Time: Selected Taiwanese Children's Piano Works and Musical Identity
McIntyre 153 / Choir Room

Taiwan's twentieth-century piano repertoire for children reflects a dynamic interplay of cultural, political, and educational influences. Focusing on composers born between 1895 and 1950, this study traces Western roots in children's piano pedagogy, including Enlightenment ideas and Friedrich Wieck's contributions, and explores their impact on Taiwanese teaching and composition. Using Taiwan as a case study, it highlights how local culture and historical circumstances shaped Western pedagogical trends, showing through selected works by composers such as Chen Mao-Shuen and Lai Deh-Ho how children's music embodies both evolving educational practices and broader cultural transformations.

9:45 am **Coffee Top-Up**
McIntyre Rotunda

10:00-10:45 am **Guest Artists: An-Lin Bardin and Naomi Niskala**
Using Music for Social Change — Music that Fosters Empathy and Compassion Towards Others
McIntyre 175 / Recital Hall

11:00 am-12:00 pm **Honors Recital No. 3 (Piano)**
McIntyre 175 / Recital Hall

11:00-11:45 am

Eleanor Gummer

The Historical Status of Women in Music
McIntyre 150 / Band Room

Historically, women were expected to learn to play instruments along with basic music concepts, but were seen as emotional rather than intellectual, unable to produce works of any merit and faced major barriers to publishing under their own names. Opportunities often depended on family support—particularly if they came from musical households or had encouraging husbands—allowing limited success within social constraints. Eleanor Gummer will present her research on the lives, challenges, successes of women and their compositions through the last 300 years—revealing a wealth of music that enriches both performance and teaching, extending far beyond the customary canon.

12:00-1:00 pm

Box Lunch

McIntyre Rotunda

LUNCH MEETUP**Sip & Stitch, Drink & Draw, Crafts & Coffee**

McIntyre 153 / Choir Room

Join us for a social lunch with friends! Crafts encouraged but not required.

MORE MUSIC**Carter Mitchell, euphonium**

Anemio: The Gods of the Wind (2021) by Thomas Ruedi (b. 1969)
 I. Zephyros, II. Euros, III. Boreas, IV. Notos

Flora Cummings, viola

Salix Lasiandra Sings (2024) by Melia Watras

Izel Ochoa-Read, piano

Ballade No. 4, Op. 52 in F Minor (1842) by Frédéric Chopin (1810-1849)
McIntyre 150 / Band Room

12:45 pm

WSMTA Annual Member Meeting

McIntyre 175 / Recital Hall

2:00-2:45 pm

Jody Graves, NCTM

Make the Art of Your Work... A Work of Art
McIntyre 150 / Band Room

Often the passion for what we love to do as artists becomes simply a matter of “working to stop working” or even a routine that becomes “automatic”. This is not a session about asking you to ‘do more’ but is designed to interact, toss around some ideas, and come away with some specific tools to advance our shared joy as teachers and performers of music. We need to refresh our relevance! The more time we spend filling our “well”, the more we have to give when we work with the people in our lives—and everyday unfolds as a work of art!

2:00-2:45 pm

Rose Freeman, NCTM

MTNA Certification Toolbox
McIntyre 153 / Choir Room

How can MTNA Certification contribute to your success as a professional independent music teacher? Join Rose and your colleagues to learn about the 5 Teacher Profile Projects and renewal process. If you are considering Certification, or have already started your projects, come to create a Toolbox of support at this interactive workshop.

2:45 pm

Coffee, Tea, and Treats*McIntyre Rotunda*

Sponsored by the Seattle Chapter's Simon-Fiset Suite of Competitions

3:00-4:00 pm

Young Composers Project Recital*McIntyre 175 / Recital Hall*

3:00-3:45 pm

Melody Puller

Opening the Door to Student Imagination through the Debussy Preludes

McIntyre 150 / Band Room

Melody Puller will discuss the benefits of teaching Debussy to develop student awareness of musical imagination, nuance, and creativity by showing how the music unlocks possibilities to build touches, pedal techniques, and sensibilities.

4:00-5:30 pm

Guest Artists: An-Lin Bardin and Naomi Niskala

Works in Progress

McIntyre 175 / Recital Hall

In this session, Guest Artists An-Lin Bardin, cello, and Naomi Niskala, piano, will work with composers on unfinished works for cello and piano. Participants will have the opportunity to hear what is working, identify areas for improvement, and receive direct feedback, suggestions, and insights from the performers.

4:00-4:45 pm

Ricardo de la Torre, NCTM

Essential Elements of Music Analysis as a Resource in the Studio

McIntyre 150 / Band Room

Having a basic understanding of how a piece is put together would seem like a necessary step to deliver a convincing performance, yet students' grasp of this knowledge is often less than complete. Focusing on simple elements of formal analysis and common harmonic progressions, the aim of this lecture is to provide some tools to help students determine the form of a piece, understand the elements that make it hold together and how this knowledge can help them learn and memorize it. Topics include mapping out a piece, drawing a formal diagram, and identifying common harmonic procedures and keyboard textures.

5:00 pm

Dinner On Your Own

7:00 pm

Washington Winners & Commissioned Composer of the Year Concert*McIntyre 175 / Recital Hall*

8:30 pm

Post-Concert Reception

Sponsored by the Eastside Chapter

McIntyre Rotunda

8:30 pm

Trivia Night*McIntyre 153 / Choir Room*

STATE HONORS RECITAL NO. 3

Sunday, June 28, 2026 · 11:00 am

WSMTA State Conference · Central Washington University · Ellensburg, WA

- French Suite No. 5, BWV 816, I. Allemande, IV. Gavotte, VII. Gigue Johann Sebastian Bach
Logan Pinkham, 15, student of Meg Krieg, NCTM
 Lynden Chapter
- Impromptu No. 1 in A-flat Major, Op. 29 Frédéric Chopin
Amy Pontes, 11, student of Elena Vozheiko-Wheaton
 Clark County Chapter
- Romanza de Amor Manuel Ponce
Lincoln Uffendorde, 17, student of Ricardo de la Torre, NCTM
 South King County Chapter
- Waltz in C-sharp Minor, Op. 64, No. 2 Frédéric Chopin
Perrie Lam, 12, student of Yelena Balabanova, NCTM
 Snohomish County Chapter
- Prelude and Fugue in F Minor, BWV 881 Johann Sebastian Bach
John DeBord, 16, student of Lark Powers, NCTM
 Mount Rainier Chapter
- Andalucía, VI. Malagueña Ernesto Lecuona
David Sexsmith, 16, student of Kathryn Morton
 Lewis County Chapter
- Ballade No. 3 in A-flat Major, Op. 47 Frédéric Chopin
Chester Pham, 15, student of Sviatlana Riedel
 South King County Chapter
- Impromptu in B-flat Minor, Op.12, No. 2 Alexander Scriabin
Avah Girges, 18, student of Oksana Ejokina, NCTM
 Eastside Chapter
- Prelude in D Major, Op. 23, No. 4 Sergei Rachmaninoff
Ruth Skelton, 18, student of Andrea Rackl
 Bellingham Chapter
- Notturmo Ottorino Respighi
Theo Goodwin, 18, student of Barbara Miller
 Spokane Chapter
- Trois mouvements de Petrouchka, I. Danse Russe Igor Stravinsky
Enzo Zhao, 16, student of Oksana Ejokina, NCTM
 Eastside Chapter
- Scherzo No.1 in B Minor, Op. 20 Frédéric Chopin
Xiaoyong (Tom) Li, 16, student of Barbara Miller
 Spokane Chapter

WSMTA ANNUAL MEMBER MEETING AGENDA

Sunday, June 28, 2026 · 12:45-1:45 pm

WSMTA State Conference · Central Washington University · Ellensburg, WA

Call to Order

Kira Miller, NCTM, WSMTA President

Motion to Adopt Agenda

Kira Miller, NCTM, WSMTA President

Welcome

Carol Cross and Dorothy Bauer, Conference Co-Chairs

Parliamentarian

Karen Hollenback, NCTM

Roll Call and 2025 Minutes

Introduction of Current and 2026-2027 Education Board

Kathy Mortensen, Education Board Chair

Introduction of Current Board of Directors

Kira Miller, NCTM, WSMTA President

Recognition of Outgoing Board Members and Committee Chairs

Kira Miller, NCTM, WSMTA President

30-Year Member Recognition

Susan Speicher, Membership Chair

Certification Recognition

Rose Freeman, NCTM, Certification Chair

Chapter of the Year

Harriet West, Chapter of the Year Chair

Treasurer's Report/Proposed Budget and Vote

Mary Grant, NCTM, WSMTA Treasurer

Slate of Nominations and Voting

Introduction of Board of Directors 2026-2027

Announcements and Appreciations

Adjournment

Kira Miller, NCTM, WSMTA President

YOUNG COMPOSERS PROJECT CONCERT

Sunday, June 28, 2026 · 3:00 pm

WSMTA State Conference · Central Washington University · Ellensburg, WA

Primary (K-2)

Pickle Truck (piano) Michael Kreul
Michael Kreul, student of Amy Riffle-Kouyeas
 Snohomish County Chapter

Grade 4

Silvery Fish (piano) Sierra Widman
Sierra Widman, student of Kaitlyn Ronstadt
 Bellingham Chapter

Grade 5

Park Butte Lookout (piano) Soren Pruett
Soren Pruett, student of Kaitlyn Ronstadt
 Bellingham Chapter

Grade 6

Sea Anemone (piano) Shyloh Studley
Shyloh Studley, student of Kaitlyn Ronstadt
 Bellingham Chapter

Grade 7

Fountains of Despair (piano) Lillian Mergler
Lillian Mergler, student of Marie Wollam-Mergler
 Edmonds Chapter

Grade 8

Scherzo and Trio in G (flute, oboe, horn, violin, viola, cello, and contrabass) Ammon Hill
Ammon Hill, student of Andrea Rackl
 Bellingham Chapter

Grade 9

Wings Meet Wind (piano) Naomi Baumann
Naomi Baumann, student of Tanya Otto
 Edmonds Chapter

Grade 10

Three Preludes (piano) Nina Iorik
Nina Iorik, student of Nino Merabishvili
 Eastside Chapter

Grade 11

Fallen (piano) Noah Brenton
Noah Brenton, student of Andrea Rackl
 Bellingham Chapter

Grade 12

Wolves at Night (piano) Theo Goodwin
Theo Goodwin, student of Barbara Miller
 Spokane Chapter

WORKS IN PROGRESS

An-Lin Bardin & Naomi Niskala

Sunday, June 28, 2026 · 4:00-5:30 pm

WSMTA State Conference · Central Washington University · Ellensburg, WA

Alexander Morgan, 14

Great Room Waltz for piano

Untitled for cello and piano

Alexander Morgan, student of Dr. Ramona Allen, began composing in 2018 at age 6, performing his first composition, "Walk in the Woods", at an elementary school talent showcase event. Alexander composes multiple pieces each year and also has a unique gift for improvisation.

Alexander's "Untitled Score" (a work in progress) for piano and cello is a rich, resonant work in which the two instruments echo and respond to one another. He is eager to further develop his skills in composing for multiple instruments.

Aiden Ramirez, 18

Sonatina in F-sharp Minor for cello and piano

Aiden Ramirez has been composing music for about six years and performing for seven. His primary instrument is cello, though he also plays piano, viola, and instruments from the recorder consort. His music explores both acoustic and electronic sound worlds, often drawing inspiration from nature, personal experiences, and cultural heritage. He recently completed his fourth and final year with the Tacoma Youth Symphony Orchestra.

As a composer, Aiden's music has been performed by ensembles including the Tacoma Youth Symphony Association, Ravenna String Orchestra, Issaquah Philharmonic Orchestra, and musicians of the Seattle Symphony. He has also participated in the Seattle Symphony's Merriman-Ross Family Young Composers Workshop, where he explored electroacoustic composition and writing for chamber ensembles alongside Seattle Symphony musicians.

This fall, Aiden will attend the New England Conservatory to study composition.

Sanny Han, 28

Serendipity for cello and piano

Sanny Han is a 5th year student at CWU pursuing degrees in Piano Performance and Music Composition. Sanny has been composing since 2019, studying with John Sanders at Edmonds Community College and Jiyoun Chung at CWU.

WASHINGTON WINNERS & COMMISSIONED COMPOSER OF THE YEAR CONCERT

Sunday, June 28, 2026 · 7:00 pm

WSMTA State Conference · Central Washington University · Ellensburg, WA

Un rêve en mer, Op. 28 Teresa Carreño

Victoria Marie Ramos, piano, student of Peter Mack, NCTM and Marissa Rebadulla-Ramos, Seattle Chapter
WSMTA Outstanding Artist Piano Competition Junior Division, Underrepresented Composer Award

A Hermit Thrush at Eve, Op. 92, No. 1 Amy Beach

Xiaoyong (Tom) Li, piano, student of Barbara Miller, Spokane Chapter
WSMTA Outstanding Artist Piano Competition Senior Division, Underrepresented Composer Award

Por Una Cabeza Gardel/Pera (arr. Zilber)

Caiden Kim and Chloe Kim, piano duet, students of Allan Park, Snohomish County and Edmonds Chapters
MTNA-Weekley & Arganbright Senior Piano Duet Performance Competition, WA Underrepresented Composer Award

Andante and Hungarian Rondo Carl Maria von Weber, arr. David Werden

Carter Mitchell, euphonium, student of Chris Dickey, Pullman Chapter
Jason Kuo, NCTM, piano
MTNA Foundation Fund Young Artist Brass Performance Competition, WA State Winner

Suite for Cello Solo, 3rd movement Gaspar Cassadó

Anthony Kim, cello, student of Kevin Krentz, Seattle Chapter
MTNA Foundation Fund Junior String Performance Competition, WA State Winner, NW Division Winner

Sonate en ut#, I. Modéré et très expressif, IV. Nocturne et Final Fernande Decruck

Angie Wang, alto sax, student of Evan Smith, Seattle Chapter
Jason Suchan, piano
MTNA Foundation Fund Senior Woodwind Performance Competition, WA Underrepresented Composer Award

Sonata No. 2: I. Maestoso, III. Toccata Grazyna Bacewicz

Avah Girges, piano, student of Oksana Ejokina, NCTM, Eastside Chapter
MTNA-Yamaha Pianos Senior Piano Performance Competition, WA Underrepresented Composer Award

Boreal Amanda Feery

Flora Cummings, viola, student of Melia Watras
MTNA Foundation Fund Young Artist String Performance Competition, WA State Winner, NW Division Winner

Sideways Nahre Sol

Elliot Matteson, piano, student of Yerin Kim, Yakima-Ellensburg Chapter
MTNA-Steinway & Sons Young Artist Piano Competition, WA Underrepresented Composer Award

Trois mouvements de Petrouchka, III. La semaine grasse. Igor Stravinsky

Enzo Zhao, piano, student of Oksana Ejokina, NCTM, Eastside Chapter
MTNA-Yamaha Pianos Senior Piano Performance Competition, WA State Winner, NW Division Winner, National First Place Winner

2026 COMMISSIONED COMPOSER OF THE YEAR

Miguel del Aguila, composer

Invisible Variations, Op. 140 Miguel del Aguila

Lark Powers, NCTM, piano

Please join us at the reception following the recital, sponsored by the Eastside Chapter.

CONFERENCE SCHEDULE OF EVENTS

Monday, June 29



SCAN TO ACCESS THE
SCHEDULE ONLINE

www.wsmta.org

- 8:00 am-3:00 pm** **Check-In Desk**
McIntyre Rotunda
- 8:00 am-1:00 pm** **Silent Auction**
McIntyre Hall
Silent Auction ends at 1:00 pm. Baskets must be picked up by 3:00 pm.
- 8:00 am** **Coffee, Tea, and Treats**
McIntyre Rotunda
Sponsored by the Yakima-Ellensburg Chapter
- 8:00-8:45 am** **Music Literacy Program (MLP) Chairs Meeting**
Facilitated by WSMTA Music Literacy Program Chair Melanie Stroud, NCTM
McIntyre 144J / Faculty Lounge
- 9:00-9:45 am** **Susan Chan**
Scenes from a Jade Window: A Multimedia Lecture-Recital of New Teaching and Performing Pieces by Major Contemporary Chinese Composers
McIntyre 150 / Band Room
- In this lecture-recital, several new teaching and performing piano pieces written by internationally renowned Chinese composers between 2009 and 2018 will be introduced and performed. These composers are namely Zhang Zhao, Alexina Louie, Lei Liang and Tan Dun. Some of these compelling, diverse and deeply expressive pieces works drew inspiration from Chinese folk music, instruments, poetry and philosophy, while others are results of interdisciplinary projects with oceanographers and film makers, as well as response to requests for pedagogy pieces valuable for students. This music provides a window through which one can experience the works of some of today's finest Chinese composers.
- 9:45 am** **Coffee Top-Up**
McIntyre Rotunda
- 10:00-10:45 am** **RoseMarie Tamburri**
Improvise... with Words!
McIntyre 150 / Band Room
- Writing can be therapeutic, self-searching, or just plain fun. In this session, our instrument will be the Pen (or device). We will: do a free-style riff on music; create a 5-minute autobiography; and write a letter to your "future" self. The goal is to express yourself through the written word. The insights you gain may help you set music goals for yourself and your students; and if you are in the process of attaining your NCTM credential, this exercise will help clarify your philosophy of teaching (there will be treats)!
- 10:00-10:45 am** **Jan Rowen Music, NCTM**
Rhythmic Concepts and Movement
McIntyre 153 / Choir Room
- This session will deal with ways to incorporate the musician's whole body into the music being played, or sung. I will demonstrate ways to teach basic pulse, meter and rhythms, and movement to music that teachers can use in their studios. It will be an interactive session where the attendees will be free to move about the room and experience pulse, beat, rhythms.
- 11:00 am-12:00 pm** **State Honors Recital No. 4 (Vocal & Instrumental)**
McIntyre 175 / Recital Hall

11:00 am-11:45 am

Greg Presley, NCTM

Training the Tactile Sense at the Piano
McIntyre 150 / Band Room

A tactile awareness of the keyboard (rather than a visual awareness) is essential for proficient sightreading, for speed, for accuracy, for technical ease and facility, and to solve thorny problems of jumps and passage work. In addition, sensitivity in this area also greatly affects tone and balance.

12:00-1:00 pm

Box Lunch

McIntyre Rotunda

LUNCH MEETINGS

Chapter Presidents and District Directors Meeting

Facilitated by Kira Miller, NCTM
McIntyre 144J / Faculty Lounge

MORE MUSIC

Central West Quartet: Lesly Cadena, violin; Jeremy Neese, violin; Tyler Jones, viola; Gabe Seery, cello

Merry Go Round of Life from *Howl's Moving Castle* (2004) by Joe Hisaishi (b. 1950)

Donut Friday Quartet: Ellie Brower, Quentin Chamberlain, Chone Ewell, Joshua Quintana, horns

Horn Quartet (2023) by Michael Mikulka (b. 1985)

Burrow Vision Quartet: Robert Morales, soprano saxophone; Jonathan Bautista, alto saxophone; Reagan Billingsley, tenor saxophone; Joey McKinley, baritone saxophone

Andante et Scherzo (1938) by Eugene Bozza (1905-1991)

McIntyre 175 / Recital Hall

1:00-2:15 pm

Guest Artists: An-Lin Bardin and Naomi Niskala

Lessons with the Artists
McIntyre 175 / Recital Hall

1:00-1:45 pm

Jeff Snedeker

Improvisation Games: Expanding Comfort Zones for Students and Teachers
McIntyre 150 / Band Room

Over the past ten years, I have developed a curriculum for improvisation for my applied students in studio classes and lessons. Using a variety of methods and materials, including Jeffrey Agrell's improvisation games, jazz playalongs, and a variety of purposeful activities and learning strategies, my students have made important musical strides that have affected their futures as performers and teachers. In this presentation, I will share the details of my improvisation curriculum, including the materials used and their sequencing, as well as ways of adapting these ideas to all levels of private and group settings, encouraging discussion among participants regarding their own experiences with improvisation.

2:00-2:45 pm

Christina Liu, NCTM

Playing to Personalities: Enhancing Learning Using Bartle's Player Types
McIntyre 153 / Choir Room

Much attention has been applied to determining a student's learning style using systems such as Keith Golay's Learning Patterns or VARK learning styles, but these systems primarily categorize cognitive preference. Bartle's Player Types, developed by Richard Bartle in 1996, focuses on intrinsic motivations and preferences instead and can be adapted to enhance a student's learning experience. Today's students face unprecedented levels of distractions due to the pervasive presence of digital devices and social media—leveraging Bartle's Player Types allows teachers to design lessons that resonate with students' intrinsic motivations, helping to sustain interest and commitment

2:00-2:45 pm

Stephen Lewis, NCTM

The Mighty Wrist: Mastering the Motions of the Wrist for Optimal Piano Technique
McIntyre 150 / Band Room

This talk is an in-depth look at the wrist, wrist motions involved in piano playing (lateral, up-down, elliptical, rotational, drawer, and stationary) and how they help various techniques and textures we often teach or play. Dr. Lewis will explore how and why these motions are so crucial to piano playing, and provide knowledge and flexibility to improve teaching, practicing, and performing on the piano. This talk also includes a brief historical overview of how piano technique evolved from harpsichord technique, particularly how the wrist plays a more crucial role in finger relaxation and arm weight in piano technique.

Silent Auction ends at 1:00 pm. Baskets must be picked up by 3:00 pm.

3:00-4:00 pm

State Honors Recital No. 5 (Piano)

McIntyre 175 / Recital Hall

Thank you for attending the 2026 WSMTA Conference!

Top-Rated

★★★★★

GAMES

Scan to Shop

KEYSTOIMAGINATION.COM

My students love these games & they've made teaching more fun, engaging, & effective.

Meagan Maganti, NH

UNLOCK STUDENT SUCCESS

STATE HONORS RECITAL NO. 4

VOCAL & INSTRUMENTAL

Monday, June 29, 2026 · 11:00 am

WSMTA State Conference · Central Washington University · Ellensburg, WA

Violin Concerto in E Minor, Op. 64, III. Allegro molto vivace Felix Mendelssohn

Robin Gu, 10, violin, student of Clarisse Atcherson
Cinda Redman, NCTM, piano
Clark County Chapter

Art is Calling for Me from *The Enchantress* Victor Herbert

Saisha Agarwal, 15, voice, student of Shih-Yi Kuan
Shih-Yi Kuan, piano
Edmonds Chapter

Scène de Ballet Charles-Auguste de Bériot

Aaron Longley, 14, violin, student of Jane Melin, NCTM
Jennifer Pan, piano
Kitsap Chapter

Concerto for Viola Jean-Baptiste Accolay

Misky Raska, 15, viola, student of Melanie Kurtzbein
Jennifer Pan, piano
Kitsap Chapter

Suite de trois morceaux, Op. 116, I. Allegretto, II. Idyll Benjamin Godard

Helen Zhou, 16, flute, student of Colleen McElroy
Kira Miller, NCTM, piano
Spokane Chapter

Beyond My Wildest Dreams Alan Menken

Sophie Harris, 18, voice, student of Melanie Stroud, NCTM
Melanie Stroud, piano
Kitsap Chapter

For Me Blaž Pucihar

Rachel Ji, 17, flute, student of Jennifer Slaughter
Spokane Chapter

1. An Die Musik/ 2. En Aranjuez Con Tu Amor Franz Schubert/ Joaquin Rodrigo

Evelyn Stana, 18, voice, student of Dorothy Bauer
Cinda Redman, NCTM, piano
Clark County Chapter

Sonata No. 5 in F Major, Op. 24, I. Allegro Ludwig van Beethoven

Katherine Krieg, 18, violin, student of Karen Visser
Clara Rogers, 17, piano, student of Meg Krieg, NCTM
Lynden Chapter

LESSON WITH THE ARTIST

Naomi Niskala

Monday, June 29, 2026 · 1:00 pm

WSMTA State Conference · Central Washington University · Ellensburg, WA

Sonatina in C Major, Op. 20, No. 1 Friedrich Kuhlau
II. Andante
III. Rondo. Allegro

Damien Stamschror, 14, student of Naomi Johnson, NCTM

Sonata No. 21 in C Major, Op. 53 Ludvig van Beethoven
I. Allegro con brio

Kinsley Black, 16, student of Patti Robertson, NCTM

Henry Bischofberger Violins Third Generation Violin Maker



Schedule an Appointment
to PLAY!

KirklandViolins.com

425-822-0717

henry@kirklandviolins.com

SALES

APPRAISAL

REPAIR

STATE HONORS RECITAL NO. 5

Monday, June 29, 2026 · 3:00 pm

WSMTA State Conference · Central Washington University · Ellensburg, WA

- Preludes, Book II, VII. What the West Wind Saw Claude Debussy
Edwin Wu, 13, student of Judith Schoepflin, NCTM
 Spokane Chapter
- Waltz in A-Flat Major, Op. 69, No. 1 Frédéric Chopin
Anne Razel J. Timajo, 11, student of Chen Liang
 South King County Chapter
- Etude in A-flat Major, Op. 10, No. 10 Frédéric Chopin
William Feng, 14, student of Peter Mack, NCTM
 Seattle Chapter
- Sonata No. 9 in E Major, Op.14, No.2, I. Allegro Ludwig van Beethoven
Yilan Jin, 12, student of Nancy Jang, NCTM
 Eastside Chapter
- Impromptu No. 1 in A-flat Major, Op. 29 Frédéric Chopin
Lara Choi, 14, student of Hannah Cho, NCTM
 Olympia Chapter
- Eight Concert Etudes, Op. 40, I. Prelude Nikolai Kapustin
Christie Santosa, 13, student of Holly Harty
 Tri-City Chapter
- Polonaise in A Major, Op. 40, No. 1 Frédéric Chopin
Hyrum Jensen, 16, student of Darin Kaschmitter, NCTM
 Yakima-Ellensburg Chapter
- Songs without Words, Op. 67 , II. Allegro leggiero (Lost Illusions) Felix Mendelssohn
Anna Borodulin, 18, student of Marina Munter, NCTM
 Moses Lake – Central Basin Chapter
- Etude No. 11 in A Minor, Op. 25 Frédéric Chopin
Lev Roseburg, 17, student of Rebekah Poulson
 Wenatchee Valley Chapter
- L'isle Joyeuse Claude Debussy
Linda Ouimette, 16, student of Barbara Miller
 Spokane Chapter
- Three Ghost Rags, II. Poltergeist William Bolcom
Alexander Toutanov, 18, student of Bonnie Debu
 Lake Washington Chapter

WHO'S WHO OF WSMTA

WSMTA Board of Directors

President	Kira Miller, NCTM
President Elect	Amanda Harris
Immediate Past President	Colleen Hunter, NCTM
Vice President	Jason Kuo, NCTM
Administrative Coordinator	Kirsten Carlson
Education Board Chair	Kathy Mortensen
Treasurer	Mary Grant, NCTM
District I Director	Jensina Oliver, NCTM
District II Director	Ryan Worswick
District III Director	Oksana Ejokina, NCTM
District IV Director	Jan Rowen Music, NCTM
District V Director	Marina Munter, NCTM
District VI Director	Naomi Johnson, NCTM
District VII Director	Fabio Menchetti, NCTM
Music Artistry Program Chair	Samantha Yeung
Communications Coordinator	Kaitlin Mitchell

WSMTA Education Board

Education Board Chair	Kathy Mortensen
Education Board Members	Selina Chu, NCTM
	Ross Salvosa
	Colleen Hunter, NCTM
	Karen Hollenback, NCTM
Ex-Officio	Kira Miller, NCTM
	Samantha Yeung
	Kirsten Carlson

BOD Committee Chairs

Chapter of the Year	Harriet West
Commissioned Composer Program Conference	Louise Nedela, NCTM
	Carol Cross, NCTM
	Dorothy Bauer
Finance	Mary Grant, NCTM
Grants: Lois Whitner Grants	Selina Chu, NCTM
	Carol Cross
Grants: Conference/State Dues	WSMTA Office
Hall of Fame Chair	Chris VanBuskirk
Honorary Life Membership	Roz Nau, NCTM
Investments	Mary Grant, NCTM
Leadership Seminar	Amanda Harris
Membership	Susan Speicher
MTNA Foundation	Peter Mack, NCTM
Steering Committee	Jani Stoehr, NCTM

Education Board Committee Chairs

Certification	Rose Freeman, NCTM
High School Credit	Samantha Yeung
MTNA Performance Competitions	Julie Swienty, NCTM
MTNA Composition Competition	Nathan Campbell
MTNA Junior Performance Competition Coordinator	Kim Bowman, NCTM
MTNA Senior Performance Competition Coordinator	Mary Kaye Owen, NCTM
MTNA Young Artist Competition Coordinator	Laura Curtis
Music Literacy Program	Melanie Stroud, NCTM

MusicLink	Amanda Snell
New Music Review	Davis Hill, NCTM
Outstanding Artist Piano Competition	Amora Bussey
Vocal & Instrumental Chair	Jane Melin, NCTM
WMEA Liaison	Susan Speicher
Workshop List	WSMTA Office
Young Composers Project	Frances Goei, NCTM

Chapter Presidents

Bellingham	Eva Suave
Clark County	Elizabeth Morris, NCTM
Clarkston-Lewiston	Kayden Warwick
Cowlitz County	Karla Dudley
Eastside	Donna Bender
Edmonds	Angela Michael, NCTM
Gig Harbor	Isabella Jie
Grays Harbor	Joy Dorsch
Kitsap County	Farida Roberts
Lake Washington	Kaitlin Mitchell
Lewis County	Ruth Newkirk Hilligoss
Lynden	Meg Krieg, NCTM
Mason County	Alice Johansson
Moses Lake - Central Basin	Gina Colver
Mount Rainier	Ricardo de la Torre, NCTM
Okanogan County	Roz Nau, NCTM
Olympia	Ryan Sowers
Pullman	Jani Stoehr, NCTM
Puyallup Valley	Trudy Still Turpin
Seattle	Josie Zocco
Skagit Valley	Linda Wilson
Snohomish County	Laura Hendrickson
South King County	Jessica Andrews-Hall
Spokane	Sarah Barclay, NCTM
Sunn Valley	Carmen Still, NCTM
Tacoma	Lark Powers, NCTM
Tri-City	Eva Moos
Walla Walla	Margo Cox, NCTM
Wenatchee Valley	Leah Jorgensen
Whidbey Island	Hope Webster
Yakima-Ellensburg	Leah Terrill
	Elizabeth Potter

WSMTA Past Presidents

1915	Lucy K. Cole	Seattle
1915-1919	Edgar C. Sherwood	Spokane
1919-1921	Herbert Kimbrough	Pullman
1921-1923	Carl Paige Wood	Seattle
1923-1924	Mrs. J. A. Naham	Ellensburg
1924-1926	Jessie Belton Hedges	Yakima
1926-1928	Boyd Wells	Seattle
1928-1930	Anna Rollins Johnson	Everett
1930-1932	Howard E. Pratt	Walla Walla
1932-1934	George A. Stout	Spokane
1934-1936	Mary I. Short	Spokane
1936-1938	Clifford W. Kantner	Seattle
1938-1940	Pearl McDonald	Seattle
1940-1942	Eleanor F. Scott	Wenatchee
1942-1943	Esther Bienfang	Walla Walla
1943-1944	Theodore F. Normann	Seattle

WHO'S WHO OF WSMTA

1944–1946	Theodore F. Normann	Seattle	Margaret Pressley	2016 Fellow
1946–1948	Edna Hanna	Walla Walla	Jani Stoehr, NCTM	2017 Fellow
1948–1950	Bernard Regier	Bellingham	Marilyn Linde, WSCTM	2017 Fellow
1950–1952	Reta Todd Dunn	Centralia	Bonnie Blanchard, NCTM	2018 Fellow
1952–1954	Henrietta McElhany	Spokane	Mary Kaye Owen, NCTM	2018 Fellow
1954–1956	John T. Moore	Seattle	David Rostkoski	2019 Fellow
1956–1958	Leonard Jacobsen	Tacoma	Lois Jacobson	2019 Fellow
1958–1960	Lois Whitner	Montesano	Marilyn Brossard, NCTM	2020 Fellow
1960–1962	Harvey Flansburg	Vancouver	Connie Hungate	2020 Fellow
1962–1963	Margaret Ott, NCTM	Spokane	Laurie Eash, NCTM	2021 Fellow
1963–1965	Faye Richardson	Seattle	Jody Graves, NCTM	2022 Fellow
1965–1967	Jane Egan	Sunnyside	John Pickett	2023 Fellow
1967–1969	Caroline Allen, NCTM	Olympia	Cherie Felts	2024 Fellow
1969–1971	Dorothy Scott, NCTM	Olympia	Cinda Redman	2025 Fellow
1971–1973	Martha Raynor-Mader	Spokane	Karen Hollenback, NCTM	2026 Fellow
1973–1975	David Rostkoski, NCTM	Cheney	Kathy Mortensen	2026 Fellow
1975–1977	Corry Celli	Seattle	Greg Presley, NCTM	2027 Fellow Nominee
1977–1979	Marianna Stensager, NCTM	Aberdeen		
1979–1983	James Edmonds, NCTM	Cheney		
1983–1985	Lois Jacobson, WSCTM	Mercer Island		
1985–1987	Merilyn Clizer, NCTM	Walla Walla		
1987–1991	Judith A. Price, NCTM	Olympia	2007	Moses Lake - Central Basin Chapter
1991–1993	Marilyn Brossard, NCTM	Burlington	2009	Okanogan County Chapter
1993–1995	Marcia Wilke, NCTM	Walla Walla	2010	Lynden Chapter
1995–1997	Mary Jane Clarke, NCTM	Olympia	2011	South King County Chapter
1997–1999	Carolyn Malnes, WSCTM	Edmonds	2013	Spokane Chapter
1999–2001	Connie C. Hungate, WSCTM	Mercer Island	2015	Edmonds Chapter
2001–2003	Marilyn A. Linde, WSCTM	Granger	2016	Kitsap County Chapter
2003–2005	Debra Florian, NCTM	Poulsbo	2017	Pullman Chapter
2005–2007	Margee Webster, NCTM	Spokane	2021	Bellingham Chapter
2007–2009	Mary Kaye Owen, NCTM	Renton	2022	Seattle Chapter
2009–2011	Jani Stoehr, NCTM	Moscow, ID	2023	Clark County Chapter
2011–2013	Dianne Johnston, WSCTM	Kingston	2024	Seattle Chapter
2013–2015	Laurie Eash, NCTM	Spokane	2025	Sunn Valley Chapter
2015–2017	Janice Smith, NCTM	Spokane	2026	To Be Announced
2017–2019	Krista Seely	Bainbridge Island		
2019–2021	Karen Hollenback, NCTM	South King County		No Applicants in 2008, 2012, 2014, 2018, 2019, 2020
2021–2023	Kathy Mortensen	Seattle		
2023–2025	Colleen Hunter, NCTM	Spokane		

MTNA Foundation Fellows

Loran Olsen, NCTM	2001 Fellow
James Edmonds, NCTM	2002 Fellow
Phyllis Pieffer, NCTM	2005 Fellow
Judith Price, NCTM	2006 Fellow
Marcile Mack, NCTM	2007 Fellow
Carolyn Malnes, WSCTM	2008 Fellow
Kent Coleman	2008 Fellow
Linda Burger, NCTM	2010 Fellow
Debra Florian, NCTM	2011 Fellow
Ford Hill, WSCTM	2012 Fellow
Michiko Miyamoto	2013 Fellow
Judith Schoepflin, NCTM	2013 Fellow
Patti Robertson, NCTM	2014 Fellow
Margee Webster, NCTM	2014 Fellow
Robin Chadwick, NCTM	2015 Fellow
Peter Mack, NCTM	2015 Fellow
Gerald Berthauime	2015 Fellow
Dianne Johnston, WSCTM	2016 Fellow
Bela Siki	2016 Fellow

1953	Mary Short	Spokane
1953	Anna Rollins Johnson	Everett
1957	Vance Thompson	Seattle
1958	Eleanor Scott	Wenatchee
1961	Mabel Campbell	Wenatchee
1962	Edith Strange	Bellingham
1963	Gene Fiset	Seattle
1975	Bertha Cross Mjelde	Bremerton (Kitsap Co.)
1975	Lois Whitner	Grays Harbor
1977	Edith Hawley	Yakima
1981	Reta Todd Dunn	Lewis County
1981	Stella Knoebel	Wenatchee
1981	Henrietta McElhany	Spokane
1982	Thelma Langdon	Spokane
1986	Jane Moore	Tacoma
1986	Margaret May Ott, NCTM	Spokane
1986	Martha Raynor-Mader	Spokane, Pullman
1988	Nadean Clarke, NCTM	Bremerton (Kitsap Co.)
1990	Caroline Allen, NCTM	Olympia
1990	Faye Richardson, NCTM	Bellingham
1991	Iris Schuster, NCTM	Spokane
1993	Marcile Mack, NCTM	Seattle

WHO'S WHO OF WSMTA

1994	Marianna Stensager, NCTM	Grays Harbor
1994	Lois Jacobsen, WSCTM	Seattle, Eastside
1996	Merilyn Clizer, NCTM	Walla Walla
1996	Glenna Gaylord, NCTM	Cowlitz County
1996	Dr James Edmonds, NCTM	Spokane
2001	Helen Morgan, NCTM	Tri-City
2002	David Rostkoski, NCTM	Spokane
2004	Carolyn Malnes, WSCTM	Edmonds
2005	Marilyn Brossard, NCTM	Burlington
2006	Mary Jane Clarke, NCTM	Olympia
2007	Marilyn Linde, WSCTM	Sunn Valley
2008	Judith Price, NCTM	Olympia
2009	Marcia Wilke, NCTM	Walla Walla
2010	Connie Hungate, WSCTM	Seattle, Eastside
2012	Debra Florian, NCTM	Kitsap County
2013	Patti Robertson, NCTM	Tri-City
2014	Dianne Johnston, WSCTM	Kitsap County
2015	Margee Webster, NCTM	Spokane
2016	Mary Kaye Owen, NCTM	South King County
2017	Jane Davis, NCTM	Tri-City
2018	Jani Stoehr, NCTM	Pullman
2019	Laurie Eash, NCTM	Spokane
2022	Janice Smith, NCTM	Spokane
2024	Cherie Felts	Olympia
2025	Krista Seely	Kitsap County
2026	Karen Hollenback, NCTM	South King County

WSMTA Hall of Fame

2002	Corry Celli (Seattle) Nadean Clarke, NCTM (Kitsap County) Elma Curry (Okanagan County) Jane Davis, NCTM (Tri-City) Jim Edmonds, NCTM (Spokane) Martha Helder (Lynden) Joy Henderson (Wenatchee) Randolph Hokanson (Seattle) Calvin Knapp, NCTM (Tacoma) Carolyn Malnes, WSCTM (Edmonds) Shirley Peringer, WSCTM (Seattle) Peggy Smith (Spokane) Mary Toy, NCTM (Spokane)
2003	Laura Boyer, NCTM (Grays Harbor) Ford Hill, NCTM (Bellingham) Lois Jacobson, WSCTM (Seattle) Marcile Mack, NCTM (Seattle) Janet Mooney, NCTM (Olympia) Loran Olsen, NCTM (Olympic Peninsula) Margaret Saunders Ott, NCTM (Spokane) Willard Schultz (Seattle) Bela Siki (Seattle) Helena Smith, NCTM (Grays Harbor) Marianna Stensager, NCTM (Grays Harbor)
2004	Gloria Burnett Scott (Seattle) Lois Burress (Moses Lake - Central Basin) Robert E. Lundquist, NCTM (Whatcom County) Richard E. Clark, NCTM (Bellingham) Julia Schnebly-Black (Seattle)

2005	Judy Baker, NCTM (Snohomish County) Marilyn Brossard, NCTM (Skagit Valley) Eleanor Haney (Tri-City)
2006	Doris Mae Bajema (Lynden) Lisa Bergman (Seattle) Janice Brink (Lynden)
2007	Verna Wagner (Spokane) Mary Cavelti, NCTM (Puyallup) Melba O'Neill (Mason County)
2008	Janet Adams (Wenatchee Valley) Clarita Burden, NCTM (Lewis County) Eleanor Van Liew, NCTM (Tri-City)
2009	Helen Madsen, NCTM (Tri-City) Marilyn Linde, WSCTM (Sunn Valley) Ella Mae Durkee, WSCTM (South King County)
2010	Margaret Pressley (Seattle) Warren Kunz (Edmonds) Thelma McCoy, NCTM (Olympic Peninsula)
2011	Michiko Miyamoto, WSCTM (Seattle) Margaret Presley (Spokane) Phyllis Pieffer (Grays Harbor)
2012	Sharon Clark, NCTM (South King County) Robin Chadwick, NCTM (Lewis County)
2014	Not Awarded
2015	Paul Twedt (Tacoma) Annabelle Wall (Tri-City)
2016	Linda Fast (Lewis County) Doreen Slaugh (Moses Lake - Central Basin) Sharon Van Valin (Eastside and Seattle)
2017	Mary Jane Clarke, NCTM (Olympia) Patricia Jorgensen (Bellingham) Diane Stober, NCTM (Wenatchee)
2018	Donald Denegar (Eastside) Dorie Guidon (Bellingham) Judy Nesson (Puyallup Valley)
2019	Julianne Barnaby (Tri-City) Danene Knudsen (Yakima-Ellensburg) Karen Scholten (Lynden)
2020	Jill Johnson (Wenatchee Valley) Joann Richardson (Kitsap County) Kathy Strickland (Tacoma and Gig Harbor)
2021	Onneta "Onnie" Lou Adams (Tri-City)
2022	Dianne Zimmermann (Puyallup Valley)
2023	RoseMarie Tamburri (Seattle) Patti Robertson, NCTM (Tri-City) Harriet West (Moses Lake-Central Basin)
2024	Carol Hibbard, NCTM (Eastside)
2025	Carol Cross, NCTM (Yakima-Ellensburg) Jason Kuo, NCTM (Seattle)
2026	Yunbo Wang Cassady, NCTM (Eastside) Holly Harty (Tri-City)

WE'RE PROUD TO SUPPORT THE WASHINGTON STATE MUSIC TEACHERS ASSOCIATION

CLASSIC PIANOS



A PASSION FOR PIANOS

Visit our showroom at 13013
NE 20th St. in Bellevue to see,
hear, play, and compare an
extraordinary selection of
the world's most sought-after
pianos, side-by-side.

ClassicPianosSeattle.com
425-462-1888



Bösendorfer

SCHIMMEL
PIANOS

1893
ESTONIA

PREMIUM PRE-OWNED
STEINWAYS

MUSIC AT EWU



YOUR SOUND YOUR HOME




PIANO | STRINGS | VOICE | BRASS | WOODWINDS | PERCUSSION

DEGREES IN PERFORMANCE, EDUCATION,
MUSIC TECHNOLOGY AND COMPOSITION

Scholarship Auditions
Online Registration 

 ewu.edu/music

 musicprogram@ewu.edu

 (509)359-6119